

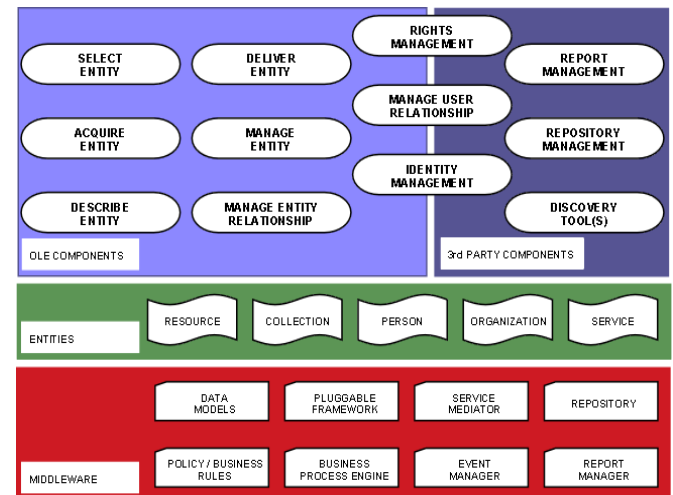


# Kuali OLE: Update from our First Quarter Startup

Kristin Antelman – NC State University  
Michael Winkler – University of Pennsylvania

# Kuali OLE Foundations

- ▶ Mellon funded design phase – Jul '08 – Aug '09
  - Demonstrated community interest in community source ILS
  - Developed high level service-oriented design
  - Delivered final report to Mellon in Aug '09



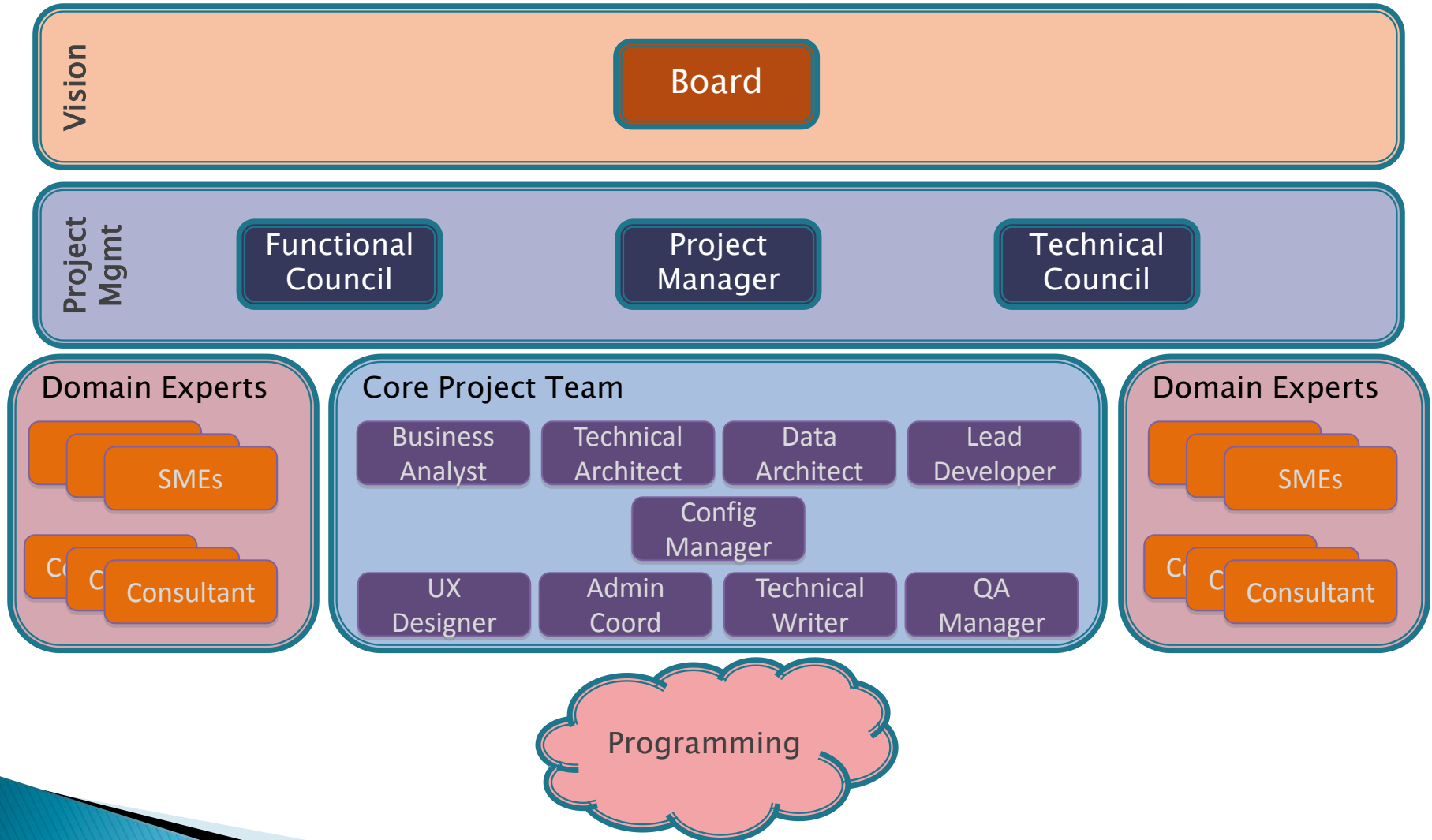
# Kuali OLE Partnership

- ▶ During the fall of 2009 we concentrated on:
  - Building our partnership
  - Charter accepted by Kuali Foundation
  - Securing funding from Mellon and from the partners for build phase – Jul '10 – Jun '12



The Andrew W. Mellon Foundation

# KUALI OLE GOVERNANCE



# THE FIRST 4 MONTHS

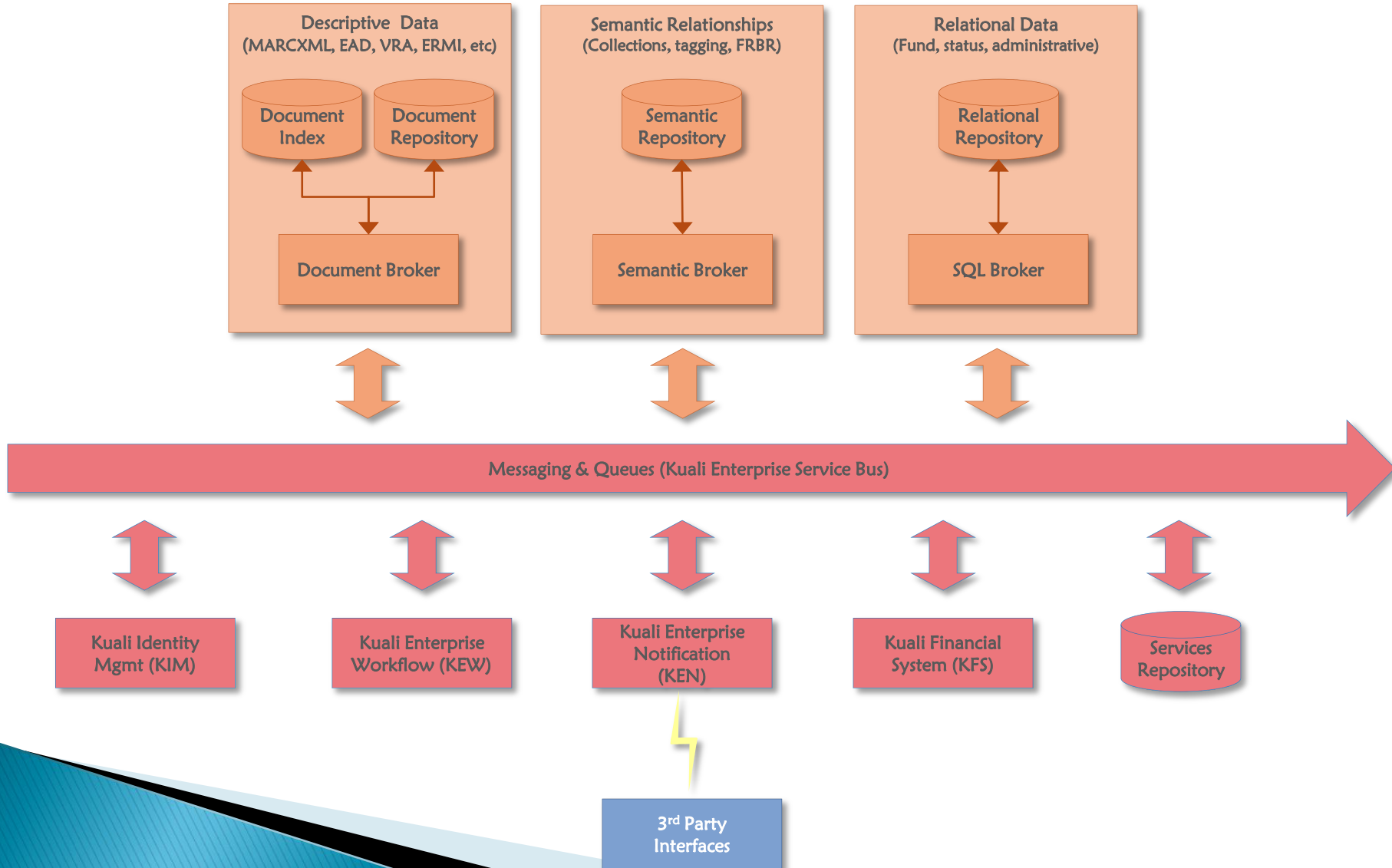
- ▶ Funded July 2010 – June 2012
  - Coding to start in January
  - Mid project release in July
- ▶ Building the teams
  - Board, Functional Council & Technical Council – Drawn from the Partners
  - Hiring the Core team – Hired from project funds
- ▶ Securing development capacity
  - Few resources within libraries for enterprise-level development
  - Competitive RFP for a development partner

# THE FIRST 4 MONTHS

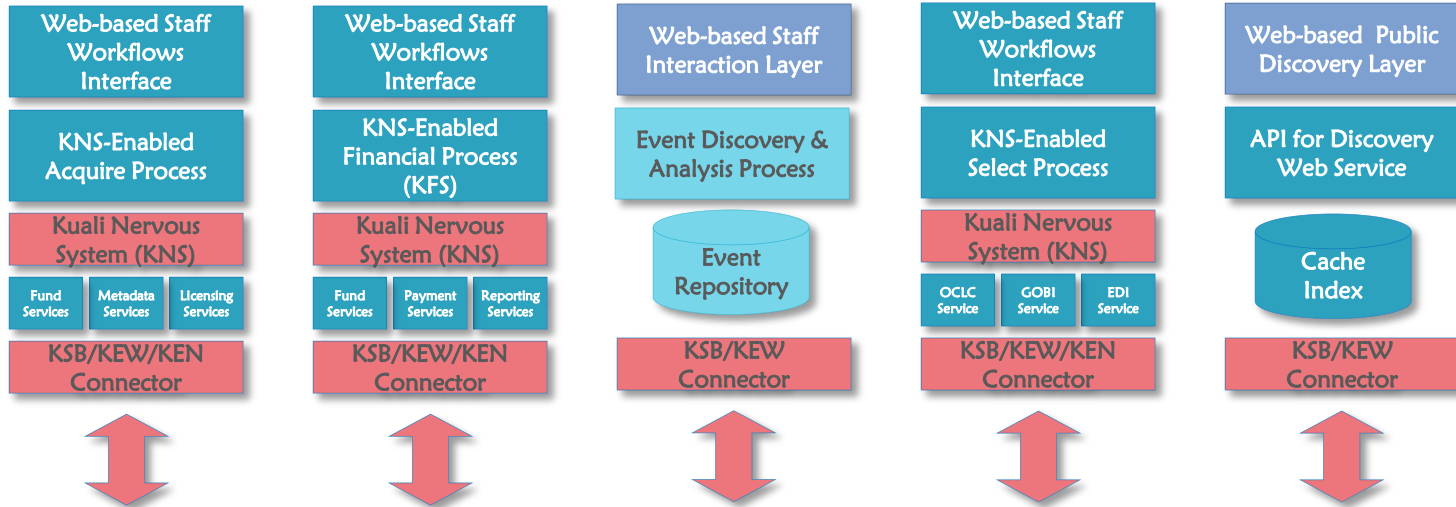
- ▶ Building on the plan
  - Distillation of user stories
  - Developing our data model
  - Inventories of target integrations
    - Critical financial core integration
    - Other enterprise and domain integrations
  - Developing process for functional specifications
- ▶ Developing our technical architecture



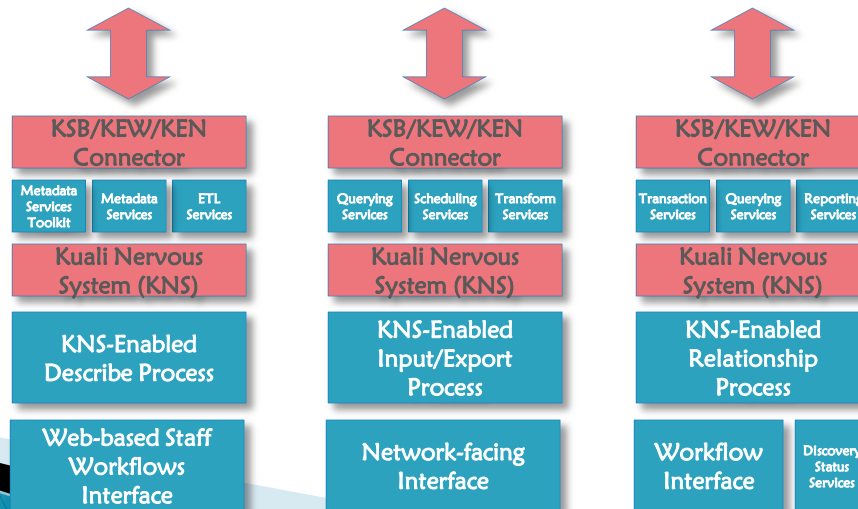
# Technical Architecture



# Technical Architecture



Messaging & Queues (Kuali Enterprise Service Bus)





# Potentials for Collaboration

- ▶ Kuali OLE is about integrations
  - With vendors, financials, IdM, LMS, discovery, reporting, etc
  - Exposing standards-based interfaces to enhance options and opportunities for interactions
  - Example, no OPAC interface, but exposes interfaces based on the ILS-DI to integrate with existing discovery tools
- ▶ In this way, Kuali OLE could form a development platform for library applications
  - Provides a framework for interaction with our data (bib, financial, relationship) and our business processes

# Potentials for Collaboration

- ▶ Through other projects
  - Sakai, ArchivesSpace, CollectionSpace, JISC Shared Services, Blacklight, DuraSpace, etc
- ▶ Iterative development & release process, so opportunities to participate in:
  - Planning
  - Interfacing
  - Testing & evaluation
  - Implementation

# Questions & Contact

- ▶ Website: <http://ole.kuali.org>
- ▶ Follow Us on Twitter: [@kualiole](https://twitter.com/kualiole)
- ▶ Talk to us:
  - [winkler4@upenn.edu](mailto:winkler4@upenn.edu)
  - [kristin\\_antelman@ncsu.edu](mailto:kristin_antelman@ncsu.edu)
  - [rhmcdona@indiana.edu](mailto:rhmcdona@indiana.edu)

